

A red Ferrari 7095C crane is shown in the process of lifting a green container. The crane's arm is extended upwards, and the container is suspended by a chain. The background is a modern building with a curved glass facade. The sky is clear and blue.

7095C
NEW AGE

7095C

Ferrari
PASSION FOR LIFTING

7095C

Link on second boom
Boom negative angle allows access to confined spaces

Extension Quick System and Smart Extension Sequence
Fast, precise, safe

Break the boundaries in performance and safety

Link on column
Constant lifting capacity on all main boom positions

425° Slewing angle
The widest slewing angle for medium sized cranes

Ergonomic control station and user-friendly interface
Comfortable, convenient and safe

Always stable
More than 40 stabilizer combinations available

Forged hook attachment
Ruggedness and durability in all applications

FERRARI



7" color display
Simple and quick access to all the functions and information

Vertical stabilizer levers
Safe and fast. Excellent supervision of stabilizing operation

Ergonomic control station engineered for maximum operator comfort and ease of operation

Dynamic Load Diagram

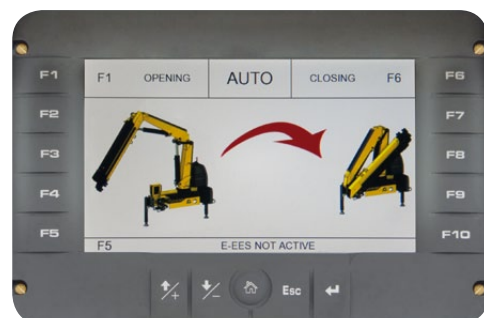


Crane lifting capacity always under control in all stabilizer positions.

After the truck has been stabilized, the operator selects the load weight to be lifted. The display shows the permitted crane outreach based on the truck stability and load selected.

- Improved efficiency
- Easy to use
- Optimised safety

Magic Touch

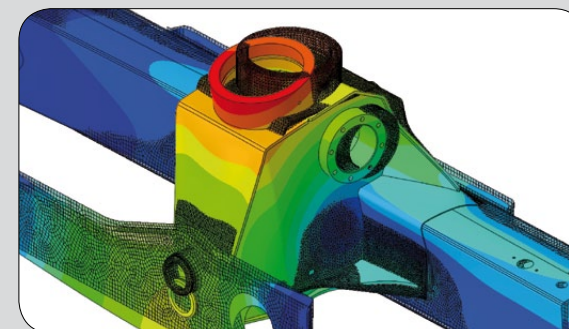


Crane Automatic folding/unfolding.

This system allows the operator to unfold the crane to a working position and fold the crane from any position to transport position by pressing a single button on the radio transmitter or display.

- Easy to start and close
- Save time
- Increased productivity and safety

High-tech development



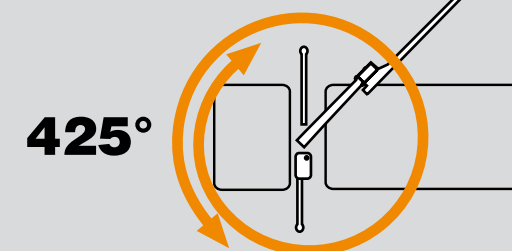
- Structures optimised for strength, weight and speed

Top Protection



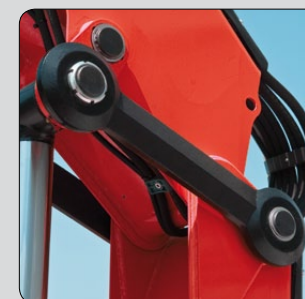
- High value retention
- Top reliability

Slewing Angle



- The widest slewing angle for medium sized cranes
- Top efficiency
- Easy to use

Functional Aesthetic



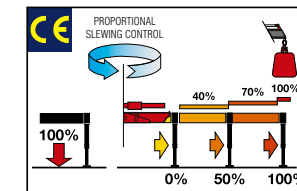
Forged double linkages on column and 2nd boom



Hex Deck cover on base

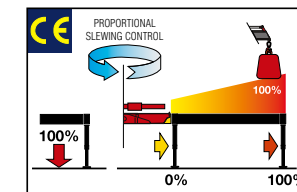
Crane control system

F3XL



With a 3" TFT display and ergonomic keyboard, the crane operator can select optimum functional parameters. The system controls the stability with 2-step beam outreach monitoring and continuous slewing control.

F4XL+TOP



A 7" color display with integrated keyboard gives the operator a higher level of awareness of the crane operation and allows selection of the best parameters for effective use. The system detects the exact position of the beams and proportionally calculates the stability.

Wide range Radio selection



Hetronic Not CE



Hetronic CE Basic



Scanreco

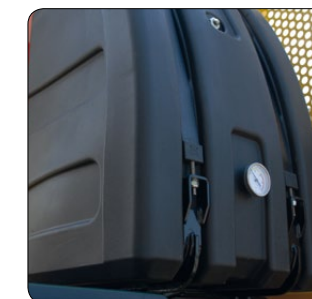


Hetronic CE Graphic



Powered by

Danfoss



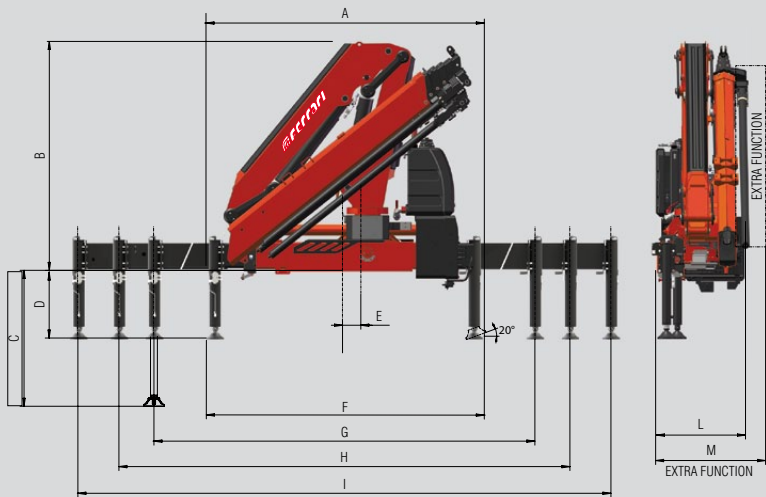
High volume oil tank made in sandwich-structured materials (PEX and PA6)



Robust column design and hoses cover

7095C *Technical data*

	Lifting Moment	Slewing Angle	Working pressure	Oil tank capacity	Max Oil flow	Max lifting height	Standard crane weight
	tm	°	bar	l	l/min	m	kg
A1	8,8	425	335	75	40	9,3	1215
A2	8,5	425	335	75	40	10,9	1305
A3	8,3	425	335	75	40	13,1	1395
A4	8,0	425	330	75	40	15,1	1480
A5	7,4	425	327	75	40	17,3	1555



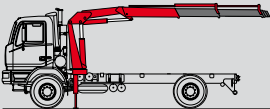
	A1	A2	A3	A4	A5
A	2290	2290	2290	2290	2290
B	2085	2085	2085	2085	2085
C	1185	1185	1185	1185	1185
D	530/585	530/585	530/585	530/585	530/585
E	160	160	160	160	160
F	2270	2270	2270	2270	2270
G	3290	3290	3290	3290	3290
H	4790	4790	4790	4790	4790
I	5755	5755	5755	5755	5755
L	800	800	800	800	845
M	845	845	845	845	910

The figure displays five crane models, A1 through A5, arranged vertically. Each model is represented by a side-view diagram of its boom and a corresponding table of specifications. The specifications include weight in kilograms (kg) and length in meters (m) for various segments of the crane arm. The boom is shown in red, and the dimensions are indicated by black lines and arrows. The weight and length values are listed in a table to the right of each diagram.

Model	Weight (kg)	Length (m)
A1	2150	4,12
A1	1500	5,93
A2	2075	4,12
A2	1425	5,93
A2	1085	7,74
A2	765	9,77
A2	565	11,80
A3	1980	4,20
A3	1330	6,01
A3	995	7,82
A3	785	9,77
A3	580	11,80
A3	400	13,95
A4	1870	4,28
A4	1230	6,09
A4	900	7,90
A4	690	9,85
A4	560	11,80
A4	400	13,95
A4	335	16,13
A5	1715	4,35
A5	1105	6,16
A5	790	7,97
A5	595	9,92
A5	475	11,87
A5	395	13,95
A5	310	16,13

Standard

- Designed in accordance with EN12999
- Design class: HC1-HD4
- Cross controls
- P-PB Proportional Power Boost
- Flanged valves
- Oil tank
- Manually extendable stabilizers
- Fixed stabilizer cylinders
- Swivel stabilizer foot
- Centralized greasing system
- EQS Extension Quick System
- SDV Smooth Descent Valve
- Red Power
- F3XL Crane control system (CE)



Recommended truck M.T.T. ton 10 - G.V.W. ton 10



One model, many applications



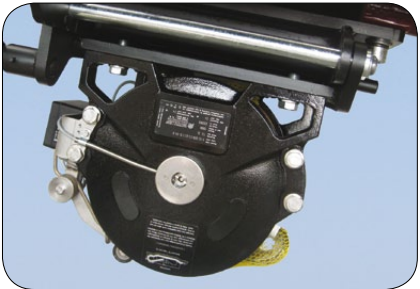
Waste handling



Construction



Fence posts, poles and landscaping



With winch



7095C

NEW AGE



ISO 9001 • ISO 14001

Quality and environmental certified



F.lli FERRARI

Via Einstein, 8
42028 Poviglio (RE) Italy
Tel. +39 0522/486308
Fax +39 0522/486330
info@flliferrari.it
marketing@flliferrari.it
www.flliferrari.com

Dealer

Data, descriptions, and illustrations pertain only and uniquely to models sold at the time of printing of this brochure. After the date of printing, this information is purely indicative and not binding upon F.lli Ferrari. Future modifications are solely at the discretion of F.lli Ferrari and are always in compliance with applicable and pertinent safety standards. To obtain updated data, descriptions, and illustrations, contact the manufacturer or your reseller. Cranes manufactured and/or marketed by F.lli Ferrari.